



LW3921



INTERMEDIATE

knitting

Designed by Jodi Lewanda

What you will need:

RED HEART® Super Saver®: 2 skeins 316 Soft White A; 1 skein each 512 Turqua B, 0385 Royal C, and 319 Cherry Red D

Susan Bates® Knitting Needles: 4.5mm [US 7]

Susan Bates® Double Pointed Needles: One set of 5, 4.5mm [US 7]

Susan Bates® Circular Knitting Needle: 4.5mm [US 7], 24" [60cm] long

18" [45.5cm] square pillow form, fiberfill, 4 buttons, 22mm button, stitch markers, yarn needle

GAUGE: 16 sts = 4" [10cm]; 24 rows = 4" [10cm] in St st. CHECK YOUR GAUGE. Use any size needles to obtain the gauge.

Buy Yarn



RED HEART® Super Saver®, Art. E300 available in solid color

7 oz (198 g), 364 yd (333 m); multicolor, heather and print 5 oz (141 g), 244 yd (223 m), flecks 5 oz (141 g), 260 yds (238 m) skeins



Compass Pillow

You don't have to be a kid to enjoy the worldly good looks of this compass pillow. Pillow and compass needle are knit in rows while the compass is worked separately in the round and then sewn onto the pillow with a button in the middle.

For additional Safari Play Set projects see LW3916.

Pillow measures 18" [45.5cm] x 18" [45.5cm]

Note

Pillow and Compass Needle are worked back and forth in rows. Pillow starts at Buttonband at center Back, around to Front and ends at Buttonhole Band at center Back. Compass is worked in the round on double pointed needles, starting at center and ending at outside edges. Change to circular needle as sts allow. Work Charts in duplicate stitch when piece has been finished.

SPECIAL ABBREVIATIONS

CDD: (Central Double Decrease) (2-st dec) Slip 2 sts together KNITWISE, knit 1 st, pass slipped stitches over.

M1: Make 1 (Increase) Lift strand between needles to left-hand needle and work strand through the back loop, twisting it to prevent a hole, [knit or purl as indicated by pattern st].

PILLOW

Front

Buttonband

With **A**, cast on 72 sts.

Rib Row 1 (Right Side): K3, *p2, k2; repeat from * to last 5 sts, p2, k3.

Rib Row 2: P3, *k2, p2; repeat from * to last 5 sts, k2, p3.

Repeat Rib Rows 1-2 for 3 more times.

Beginning with a right side row, change to St st and work until piece measures 9¾" [24.5cm] from beginning, end with a right side row.

Knit 1 row on wrong side for turning ridge. Continue to work in St st until piece measures 18¼" [46.5cm] from first turning ridge, end with a right side row.

Knit 1 row on wrong side for second turning ridge.

Continue to work in St st until piece measures 8¼" [21cm] from second turning ridge, end with a wrong side row.

Buttonhole Band

Rib Row 1 (Right Side): K3, *p2, k2; repeat from * to last 5 sts, p2, k3.

Rib Row 2: P3, *K2, P2; repeat from * to last 5 sts, k2, p3.

Repeat Rib Row 1.

Buttonhole Row (Wrong Side): P3, [k2, p2] twice, bind off 2 sts, *[p2, k2] 4 times, p2, bind off 2 sts; repeat from * once more, [p2, k2] twice, p3.

Next Row: Repeat Rib Row 1, casting on 2 sts above bind-off sts of previous row.

Repeat Rib Row 2.

Repeat Rib Rows 1-2 once.

Bind off in rib.

COMPASS

With **B** and double pointed needles, cast 8 sts. Divide sts evenly around double pointed needles. Join to work in rounds, taking care not to twist sts. Place marker for beginning of round.

Round 1 and All Odd Numbered Rounds

Unless Otherwise Noted: Knit.

Round 2: *K1, M1; repeat from * around – 16 sts.

Round 4: *K2, M1; repeat from * around – 24 sts.

Round 6: *K3, M1; repeat from * around – 32 sts.

Round 8: *K4, M1; repeat from * around – 40 sts.

Round 10: *K5, M1; repeat from * around – 48 sts.

Continued...



Please Note: Print this pattern using Landscape Orientation.

Find more ideas & inspiration: www.redheart.com

©2014 Coats & Clark

RedHeart.com

Page 1 of 2

Round 12: *K6, M1; repeat from * around – 56 sts.

Round 14: *K7, M1; repeat from * around – 64 sts.

Round 16: *K8, M1; repeat from * around – 72 sts.

Round 17: Change to **A** and knit,

Round 18: With **A**, *k9, M1; repeat from * around – 80 sts.

Round 19: Cut **A** and change to **B**, knit.

Round 20: With **B**, *k10, M1; repeat from * around – 88 sts.

Round 22: *K11, M1; repeat from * around – 96 sts.

Round 24: *K12, M1; repeat from * around – 104 sts.

Round 26: *K13, M1; repeat from * around – 112 sts.

Round 28: *K14, M1; repeat from * around – 120 sts.

Round 30: *K15, M1; repeat from * around – 128 sts.

Round 32: *K16, M1; repeat from * around – 136 sts.

Round 34: *K17, M1; repeat from * around – 144 sts.

Round 36: *K18, M1; repeat from * around – 152 sts.

Round 38: *K19, M1; repeat from * around – 160 sts.

Round 40: *K20, M1; repeat from * around – 168 sts.

Round 42: *K21, M1; repeat from * around – 176 sts.

Round 44: *K22, M1; repeat from * around – 184 sts.

Round 46: *K23, M1; repeat from * around – 192 sts.

Round 48: Cut **B** and change to **C** and *k24, M1; repeat from * around – 200 sts.

Round 49: Purl.

Round 50: Knit.
Bind off purlwise.

Compass Needle (Make 2)

With **A**, cast on 2 sts.

Beginning with a right side row, work 2 rows in St st.

Increase Row: K1, M1, k1 – 3 sts.

Working in St st, work 3 rows.

Increase Row: K1, M1, k1, M1, k1 – 5 sts.
Work 3 rows.

Increase Row: K1, M1, k3, M1, k1 – 7 sts.
Work 5 rows.

Increase Row: K1, M1, k5, M1, k1 – 9 sts.
Work 7 rows.

Increase Row: K1, M1, k7, M1, k1 – 11 sts.
Work 13 rows.

Buttonhole Row (Right Side): K4, bind off 3 sts, k4.

Next Row: Change to **D** and p4, cast on 3 sts above bind-off sts of previous row, p4.
Work 12 rows.

Decrease Row: K1, ssk, k5, k2tog, k1 – 9 sts.
Work 7 rows.

Decrease Row: K1, ssk, k3, k2tog, k1 – 7 sts.
Work 5 rows.

Decrease Row: K1, ssk, k1, k2tog, k1 – 5 sts.
Work 3 rows.

Decrease Row: K1, CDD, k1 – 3 sts.
Work 3 rows.

Decrease Row: Ssk, k1 – 2 sts.
Work 2 rows.

Bind off.

FINISHING Embroidery

With right side facing, center Large Point Chart pointing towards one side between increases on Round 18. Duplicate Large Point Chart with **A**. Repeat to work Large Point on remaining 3 sides between increases.

In same manner, duplicate st Small Points between increases pointing towards corners

in between Large Points.

Center **N** Chart 6 rounds above last row of Large Point. With **A**, duplicate st **N** Chart. Working clockwise around, repeat for remaining direction letters with **E** Chart to right of **N** Chart, **S** Chart at opposite point and **W** Chart to left of **N** Chart.

Weave in ends.

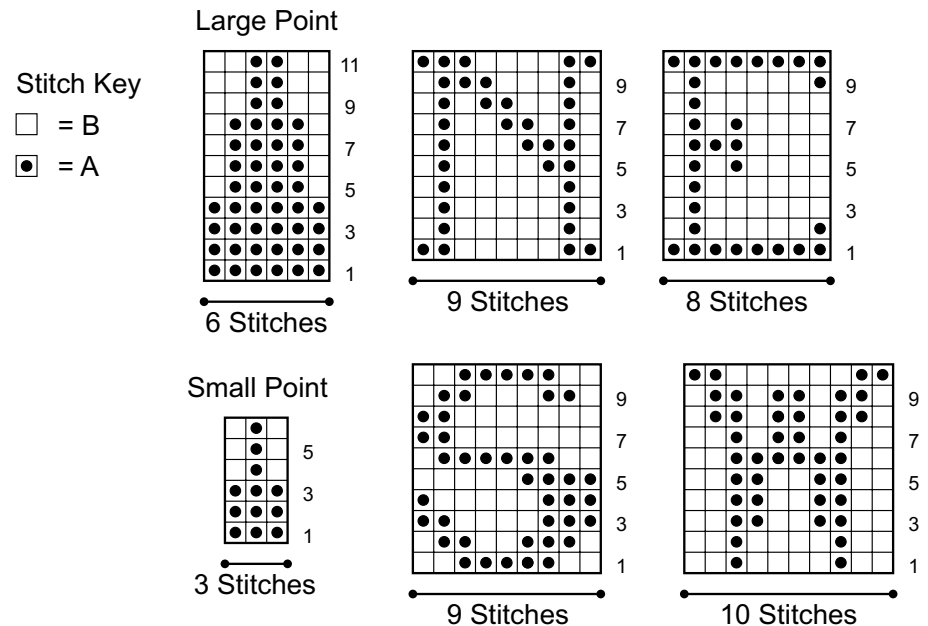
Center compass on front of Pillow. With **B**, whipstitch Compass to front of Pillow. Sew one button to center of Compass.

Fold Pillow piece along turning ridges, positioning Buttonhole Band over Buttonband. Sew side seams. Sew buttons opposite Buttonholes. Insert pillow form and button closed.

Sew Compass Needle pieces together, matching colors. Stuff with fiberfill through buttonhole opening. Sew buttonhole opening closed. Button Compass Needle to center front of Compass.
Weave in ends.

Abbreviations

A, B, C = Color A, B, C; **k** = knit; **k2tog** = knit 2 sts together; **mm** = millimeters; **p** = purl; **p2tog** = purl 2 sts together; **St st** = Stockinette stitch; **st(s)** = stitch(es); **tog** = together; **[]** = work directions in brackets the number of times specified; *** or **** = repeat whatever follows the * or ** as indicated.



Please Note: Print this pattern using Landscape Orientation.